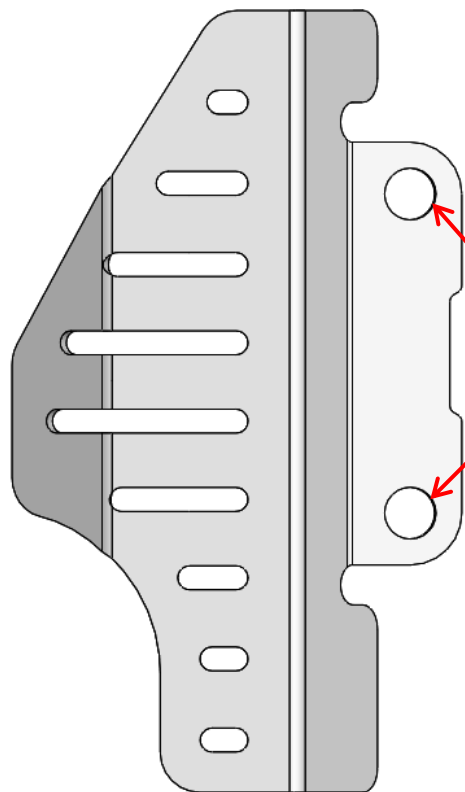


**BRAKE PUMP PROTECTION**  
Ref.: 2CP2350085

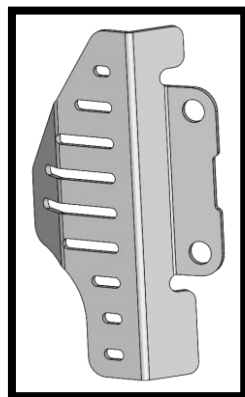


## ASSEMBLY SEQUENCE / INSTRUÇÃO DE MONTAGEM

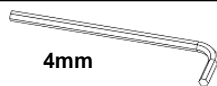
	N.m (TORQUE)	
	AÇO / STEEL	INOX
M4	2,7	0,8
M5	5,5	1,7
M6	9,7	3
M8	23	7,9
M10	47	14
M12	80	24



**PARAFUSO DE ORIGEM  
ORIGINE SCREW**



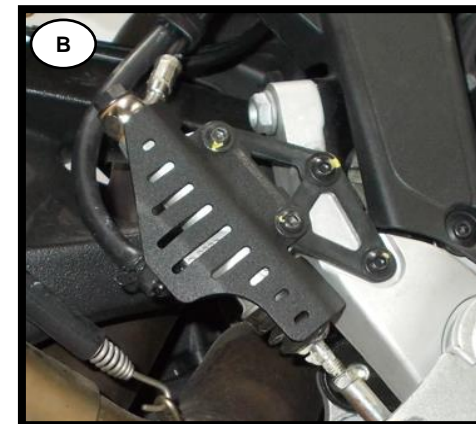
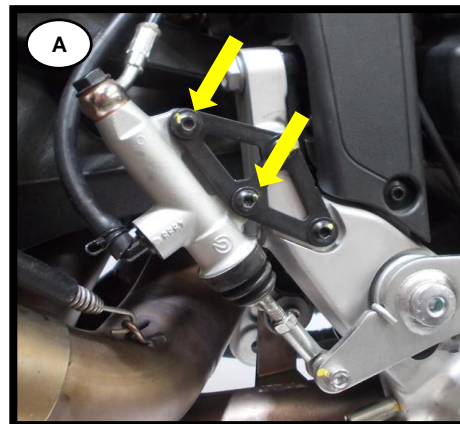
4mm



10mm



## BRAKE PUMP PROTECTION



### English:

**Attention:** Follow the installation sequence as shown in the photos.

- **Photo A:** Remove origin screws shown in the photo.
  - **Photo B:** Attach the new protection part using the original screws.
- Add a little medium strength loctite and torque all screws to the correct value.**

### Português:

**Atenção –** Seguir a sequência de montagem que pode ver nas fotos.

- **Foto A:** Remover parafusos de origem marcados na foto.
  - **Foto B:** Montar a nova proteção com os parafusos de origem.
- Adicionar um pouco de loctite nos parafusos e apertar todos os parafusos com o valor correto de torque.**

### Français:

**Attention:** Suivre le séquence de photos d'assemblage.

- **Photo A:** Enlever les vis d'origine marqués sur la photo.
  - **Photo B:** Assembler la protection avec les vis d'origine.
- Ajouter un peu de loctite sur les vis et torquer toutes les vis avec le bonne valeur.**